

Community and District Collaboration, Why do it?

Jennifer Harris, Robin Carmack,
Trude Burnett, Erin Camper





- Response has to have been said or observed during the session
- You have to be able to name what you saw or learned

Who we are

Jennifer Harris MSE (she / her)

Education Specialist
Sie Center for Down Syndrome,
Children's Hospital Colorado

Erin Camper
Parent Advisor and Trainer
PEAK Parent Center
719 531 9400
ecamper@peakparent.org


Trude Burnett, M.A.Ed.
Special Education Instructional
Coach & SSN Teacher
St. Vrain Valley Schools

Robin Carmack
Significant Support Needs (SSN)
District Lead
Douglas County School District

Today's Goals


- Participants will understand the need for and benefits of effective collaboration with community providers.
- Participants will learn tools for how to build collaborative relationships between school districts and community providers.





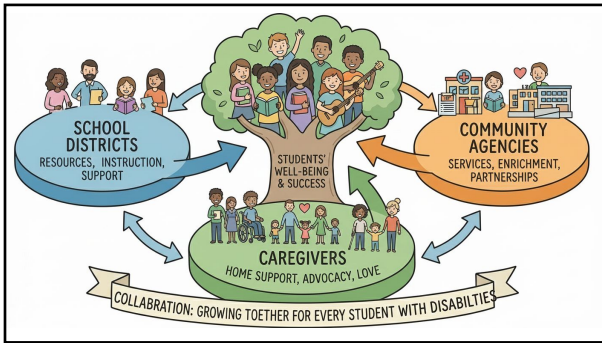
WHO ARE YOU!

One arm up for Option One
Two arms up for Option Two
Wave them both around for Option Three



Benefits of collaboration "Why"





- Increased access to specialized interventions
- More comprehensive and coordinated care
- Improved communication across support networks
- Greater opportunities for independence, inclusion, and real-world learning
- Smoother transitions into adulthood

**Benefits
for
Students**

- Clearer, unified communication with providers
- Reduced stress navigating multiple and complex service systems
- Access to respite, training, and support groups
- Greater consistency in strategies used at school and home
- Empowerment and participation in education processes
- Has a thought partner to "let off steam to" and has the opportunity to process and understand the intended message

**Benefits
for
Caregivers**

Strengthening the Support Ecosystem

- **Building Capacity:** Shared responsibility that improves culture, trust, and collective effectiveness.

Benefits for Schools

Enhancing Problem-Solving & Strategy

- **Multi-Faceted Solutions:** Draw on diverse expertise and varied perspectives.

Improving Student Outcomes

- **Authentic Inclusion:** Consistent support, continuity of care, and stronger transitions to post-school success.

Benefits for Schools

- Expanded expertise without overloading staff
- Shared responsibilities and reduced duplication of services
- Stronger IEP development with multidisciplinary insights
- Access to community-based learning opportunities
- Enhanced family engagement through wraparound supports

- We are passionate about our work and eager to share our knowledge and resources!
- Collaboration is often directly aligned with our mission and vision
- Build community
 - Brings additional expertise, parent education, and youth-focused resources
- Connected to funding / grants

Benefits for Community Providers



- Speech Therapists, Occupational Therapists, Physical Therapists, Mental Health team, Behavior Support Team
- Help support consistency, share tools & strategies, lean on each other.



Home Services

Who We Are & What We Do

- PEAK is Colorado's designated **Parent Training & Information Center (PTI)** under IDEA
- We serve families, self-advocates, educators, and related service providers
- We support, coach, and teach advocacy skills
- Our goal: **full inclusion of people with disabilities** in schools, communities, employment, and life

Peak Parent Center

Our Mission, Impact & Services

- Equip families of children with disabilities with training, information, and technical assistance to advocate effectively
- Children and adults with disabilities live richer, more active lives as full members of their schools and communities

Key Services

- 1:1 Parent Advising
- Webinars, Workshops & Inclusion Conference
- Project Power & Personal Networks for Transition
- District consultation, trainings & curriculum development

Peak
Parent
Center

Community Parent Resource Center (CPRC) focus on reaching underserved parents of children with disabilities, including those in particular areas with low incomes.

Provide Education Training and Support for Families



Areas covered:

The Denver Metro area
Adams County
Arapahoe County
Boulder County
Broomfield County
Denver County
Douglas County
Jefferson County

Show
+ Tell



- IEP Facilitators
- Quality Indicators
- Family Engagement Specialists
- Deaf/ Blind Grant

Collaborative
Opportunities



As a private, nonprofit pediatric hospital, our mission is to improve the health of children through the provision of high-quality, coordinated programs of patient care, research, education and advocacy.

We are Colorado's only licensed specialty hospital exclusively for children. We are ranked as being one of the best in all ranked specialties, and in the top 10 for 6 of those specialties.

Our therapists and team members LOVE to collaborate.

**Children's
Hospital
Colorado**

Slide: Advocacy & Support Across the Lifespan

Youth Services

- IEP & transition planning support

Adult Services

- Supported & customized employment
- Independent & supported living programs

Services for All Ages

- Individual advocacy & case navigation
- Self-advocacy & leadership development
- Family support & caregiver resources
- Information, referrals & community connections
- Benefits assistance (SSI, SSDI, Medicaid waivers)

The Arc



PRC-Salttillo (TouchChat, LAMP)

Local representative(s):
Cherianne Anderson OTR/L
Phone: (970) 822-2048
E-mail: cherianne.anderson@prc-salttillo.com
Hayley Carter, M.A., CCC-SLP
Phone: (970) 200-5802
E-mail: hayley.carter@prc-salttillo.com

**Speech
Generating
Device
Manufacturers**

Tobii Dynavox


Local Representative:
Jacob Faircloth
Ph: 303-241-4761
E-mail: jacob.faircloth@tobiidynavox.com

Case Management Agencies
(Formerly CCBs)

Support for the Whole Child

Support in the home = more stabilized family unit

- Help manage complex student needs
- See through the lifespan
- Support consistency between school / home / community providers
- Support childcare needs




Case Management Agencies
(formerly CCBs)



Do you know *who* your CMA is and how to make a referral?

CMA and CCB Agency Directory-
<https://hcpf.colorado.gov/case-management-agency-directory>

Let's do it!
"How"



Create the Roadmap

- Identify the need
- Are all parties on board?
- Make the connection
- Develop a Plan

Identify the Need or Purpose

- Meet resource or material need
- Need for knowledge
- Conflict (alignment of goals)
- Thought partner / a way to get out of the box
- Expansion of network outside of the classroom.

Are all Parties on Board?

- Consensus from district, administration, staff, and of course - caregivers.
 - Is there a budget?
 - Can PLC or Staff PD days be used?
 - Can paras attend? How will they be compensated or covered?
- **Obtain consent.**

Make the Connection

- Ask the family if they have any ideas.
- Do a Google search
- Attend resource fairs, build your network.
- Think about how you will organize and collect the resources for future use.
- Think about how you will share the resources with families – even if they aren't a good fit for school / district use.



Tips for Talking to Community Partners

- Use collaborative language
 - Not demanding services or supports
- Be specific in your ask, or clear about what the issue at hand is.
- Be open to a variety of options.
- Ask about how they support throughout the lifespan of the student.
- Ask them how they proceed or what next steps are.
- Ask them if they have any additional resources for you or families that they would want to share.



Develop a Plan Together

- What is the desired outcome?
- How do we meet?
- How will we match the plan to the need?
- What is the timeline?
- How will the caregivers be connected or informed?
- How can it be documented?



From the field ... (1)

Benefits

- Learning new things! ABA <--> Teachers
- Strengthen relationship with parents
- Increased student engagement & progress
- Families and students are supported outside of the academic setting in a more "life skills" way
- Extra eyes in the room to collect data

From the field ... (2)

Challenges

- Outside agencies often don't understand the expectations and parameters of public schools
- Misinformation
- Adult behavior...
- Muddy expectations
- Adult Emotions

From the field ... (3)

Lessons Learned

- Communication
- Communication
- Communication
- It's ok to say, "no"
- What can & can't be done by each entity
- Overt goal setting based on agreed upon need

Resources Doc



https://docs.google.com/document/d/1l0B4Z3TXFJs7PX2biNCham5w56kQ1vm-_N1qFtHmp0l/edit?usp=sharing

THANKS!

Do you have any questions?

CREDITS: This presentation template was created by [amrigo](#), including icons by [FlatIcon](#), and infographics & images by [Freepik](#), and illustrations by [Stories](#).

Please keep this slide for attribution

